

WiSA Irrigation Automation Unit

Installation of Milcast Drop Box

Tools Required

- **Set of pliers**
- **13 mm spanner**
- **13 mm socket with driver**
- **3 mm flat-head screwdriver**



Installation Steps

1. Attach the Clamping Plate (Upper Bolts)

Using 2 × M8 × 70 mm bolts and nuts, loosely connect the 6 mm clamping plate to the pedestal using the upper two holes only. Do not fully tighten yet.



2. Position the Pedestal on the RHS

Spread the clamping plate away from the pedestal and position the pedestal centrally over the RHS. The unit should be able to rest its weight on the bolts while remaining balanced.



3. Install Lower Clamping Bolts

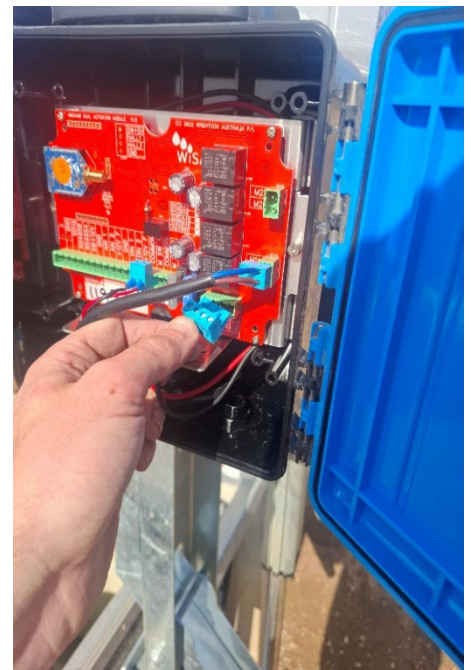
With the unit resting on the RHS, install 2 × M8 × 70 mm bolts and nuts through the lower holes of the clamping plate and pedestal. The unit should now support itself on the outlet.



4. Move Actuator Arm for Access

To gain access to tighten the clamping bolts:

1. Connect the battery to the control board.
2. Press the manual operation button on the base of the unit.
3. Allow the actuator arm to move, keeping clear to avoid injury.



4. When the short section of the arm is roughly horizontal, press the button again to stop it. Using the 13 mm spanner, socket, and driver, fully tighten all M8 clamping bolts.



5. Install Solar Panel and Mast

Slide the solar panel and mast assembly through the cut-out at the top of the pedestal. Ensure the base of the mast is seated on the support tab.

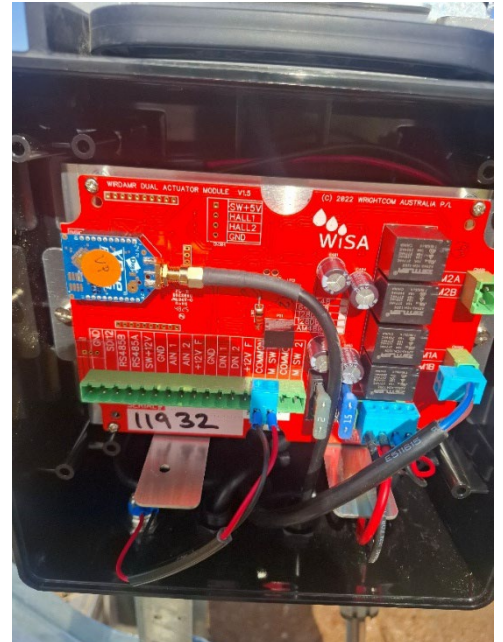
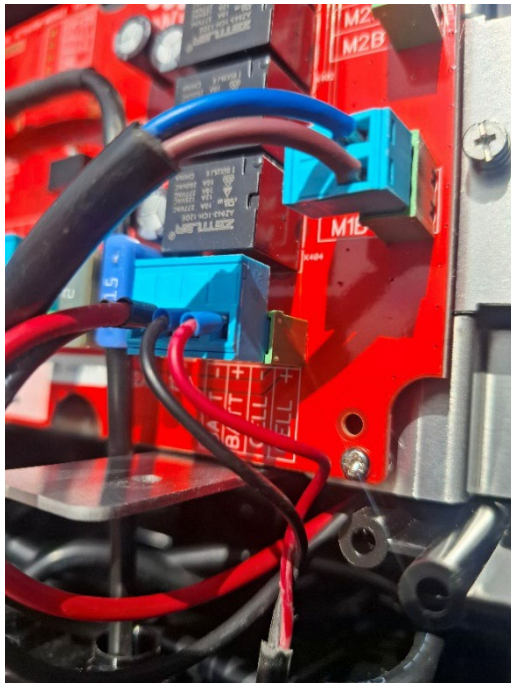
Rotate the mast so the solar panel faces the direction of maximum sun exposure (typically north). Secure the mast using the supplied M8 U-bolt and nuts.



6. Route and Connect Cables

Pull the solar cable and aerial cable out from the base of the mast and feed them through the glands in the enclosure base. Tighten the glands firmly to prevent moisture or insects entering.

- Connect the solar wires to the power terminal, ensuring correct polarity.
- Connect the aerial cable to the radio PCB by hand-tightening the SMA connector.

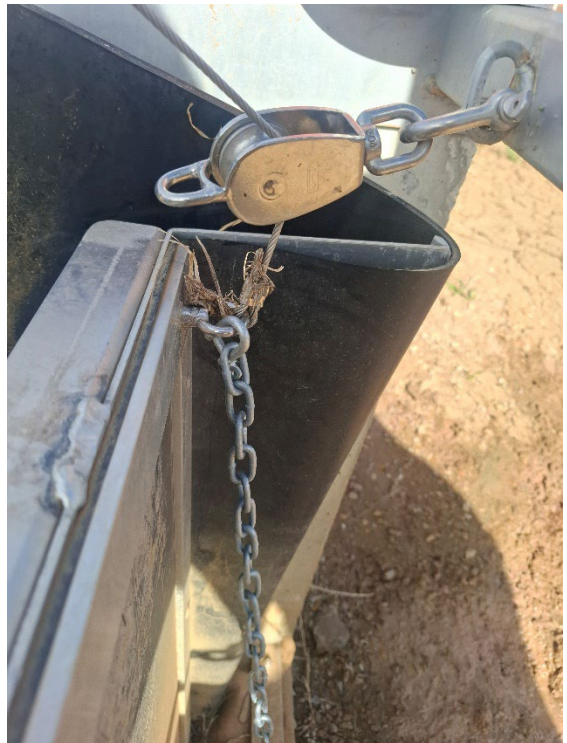


7. Attach Actuator Chain Assembly

Using the M8 × 100 mm bolt, washers, nuts, and short chain, attach the chain to the actuator arm.

The distance between the arm pivot point and the bolt hole should closely match the height of the outlet door to ensure correct travel.

Using the supplied D-shackles, attach the long chain to the outlet door mounting points.



8. Set Chain Length and Tension

Connect the long chain on the outlet door to the short chain on the actuator arm using the supplied D-shackles.

- Chain should be firm but not tight when closed
- Allow 10–15 mm deflection
- Full door travel must be achievable

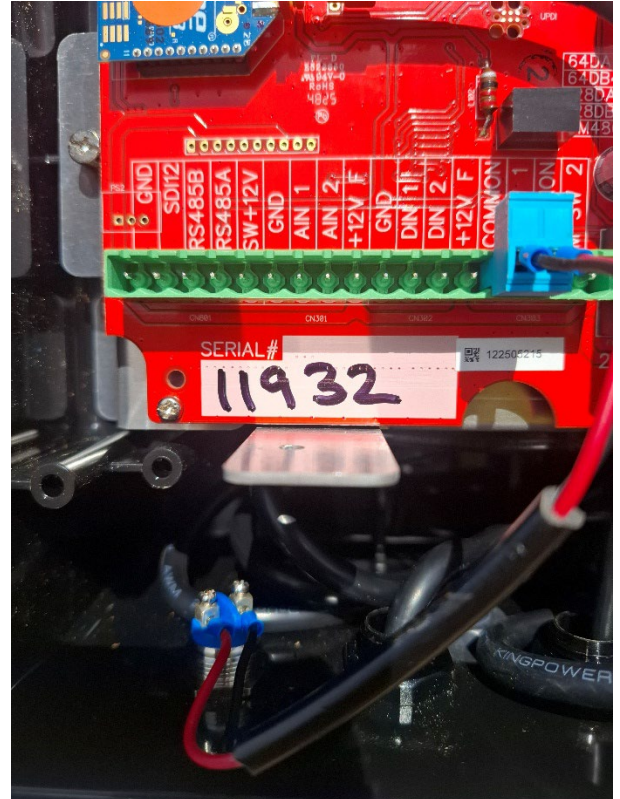
Some trial and error may be required.
Excess slack when fully open is acceptable.



9. Install Aerial and Final Checks


Install the aerial onto the top of the mast. If the mast height makes access difficult, install the aerial before erecting the mast.

Record the serial number and installation location of the unit for software setup.




Installation complete.



 **Australia:** 1800 254 476

 **Email:** sales@irrigatewisau.com.au

 **Connect with us:**
Facebook | Instagram | YouTube